

SEM1720 SMART POWERED PROCESS SIGNAL ISOLATOR/CONDITIONER

IMPORTANT - CE & SAFETY REQUIREMENTS



This product is suitable for environment Installation category II pollution degree.
 The product is classed as "PERMANENTLY CONNECTED EQUIPMENT".
 Product must be DIN rail mounted, inside a suitable enclosure providing environmental protection to IP65 or greater.
 Dc supply must be derived from a local supply and not a distribution system.

To maintain CE EMC requirements , input and supply wires must be less than 30 metres.
 The product contains no serviceable parts , or internal adjustments. No attempt must be made to repair this product. Faulty units must be returned to supplier for repair.
 This product must be installed by a qualified person. All electrical wiring must be carried out in accordance with the appropriate regulations for the place of installation.
 Before attempting any electrical connection work, please ensure all supplies are switched off.
 The safety of any system incorporating this equipment is the responsibility of the assembler of the system.

ABSOLUTE MAXIMUM CONDITIONS (To exceed may cause damage to the unit):-

Supply Voltage	± 240 V dc ± 240 V ac (Protected for over voltage)
Input Voltage	± 5 V between any terminals
Input Current	± 20 mA between terminals
Output	30 V dc
Ambient	Temperature (-20 to 75) °C Humidity (10 to 95) % RH (Non condensing)
External Supply	1 Amp anti surge fuse recommended
Isolation	Between all five ports (C1 Input , Ch2 Input, Ch1 Output, Ch2 Output, Supply) 3.75 KV DC



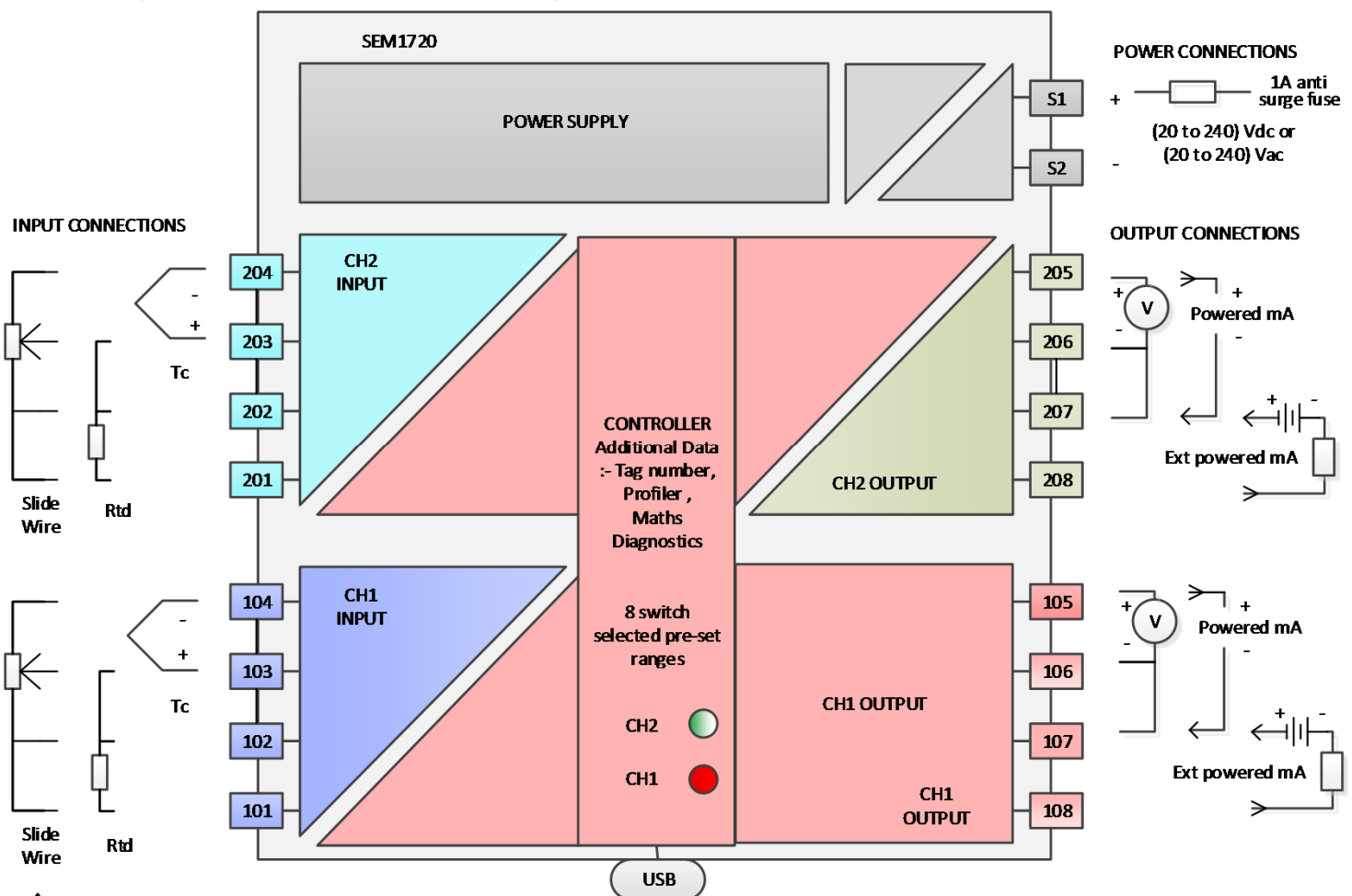
Every effort has been taken to ensure the accuracy of this document, however we do not accept responsibility for damage, injury, loss or expense resulting from errors and omissions, and we reserve the right of amendment without notice.

RECEIVE AND UNPACKING

Please inspect the packaging and instrument thoroughly for any signs of transit damage. If the instrument has been damaged, please notify your supplier immediately.

CLEANING : only clean using damp cloth with water or a mild soap solution.

OPERATION (please refer to data sheet for full technical specification.)



CONFIGURATION

This product is configured using the USB port of a PC running USB_Speed_Link software, available from your supplier. During configuration, the product is powered directly from the usb port, removing the need for additional power. If the user wishes to monitor live process data during configuration, then power must be applied.

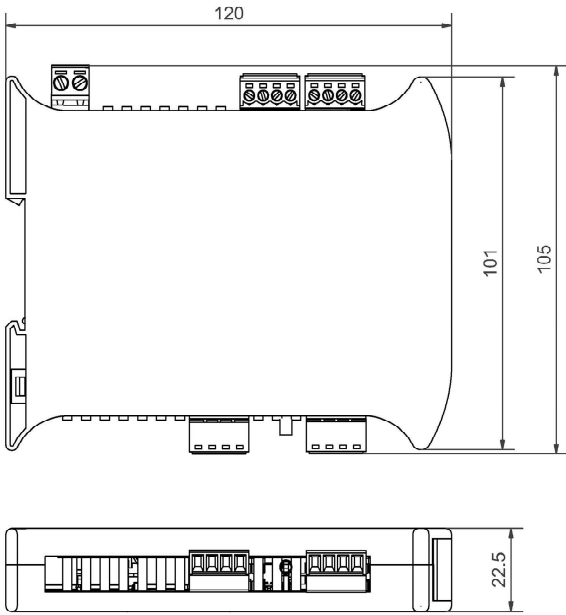
Note CH1 output and USB port of the device share the same ground, therefore care must be taken to ensure isolation between PC and output circuit. This is best achieved by using a portable laptop or notebook PC. USB_Speed_Link software is provided with a detailed help menu to guide the user through the configuration procedure.

For programing / configuration information see help file in USB Speedlink.



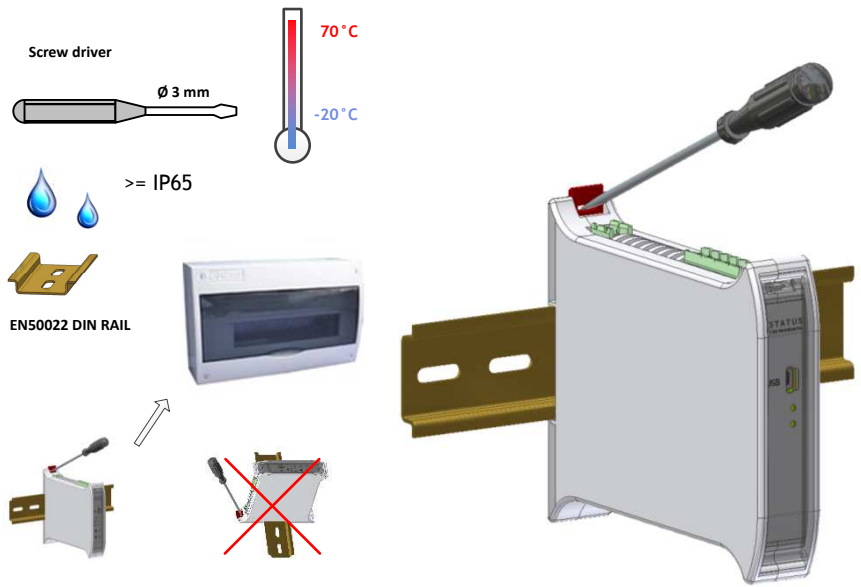


MECHANICAL INSTALLATION



ALL DIMS IN mm

MOUNTING



ELECTRICAL INSTALLATION

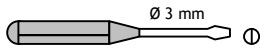
Screened Cable



CONNECTION

Use recommended types for cable length (3 to 30) metres.

Screw Driver



- 1.0 TURN OFF SUPPLY BEFORE WORKING ON ANY ELECTRICAL CONNECTION.
- 2.0 SUPPLY IS OVER VOLTAGE PROTECTED AND FUSED WITH INTERNAL FUSE.
- 3.0 FUSE SUPPLY WITH 1A ANTI SURGE FUSE.

