

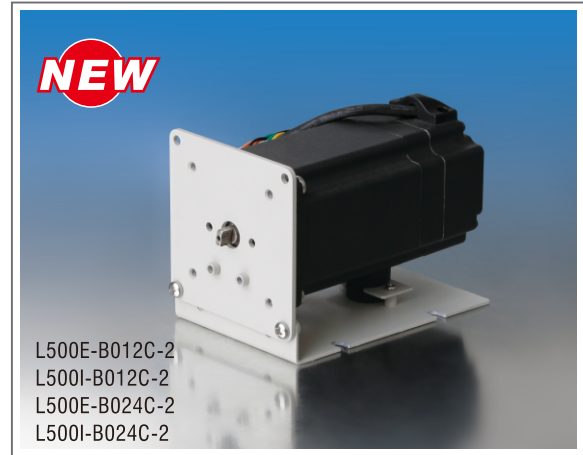
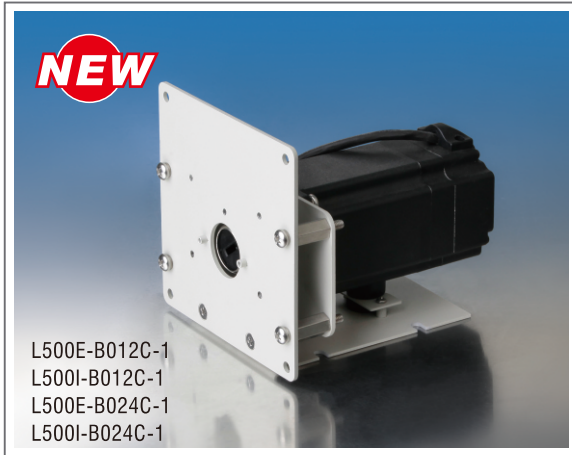
OEM Variable Speed Peristaltic Pump

Brushless DC Motor Series

Max. Flow Rate



ODM PERISTALTIC PUMP

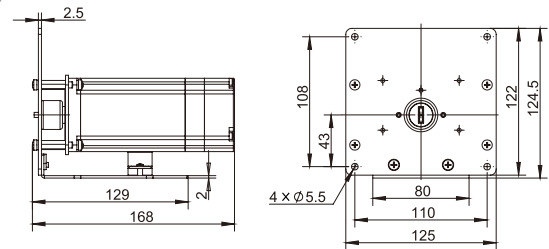


Brushless DC motor with built in controller has better reliability, longer life time and much lower noise.
Simple to control the speed by potentiometer or 0-4V analogue signal.
Can be fitted with several different pump head.
Soleplate or panel installation.

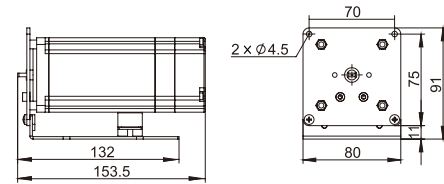
Pump Specification

| Items | Specification |
|-----------------------|--|
| Speed | 50rpm-500rpm, CW/CCW |
| Speed resolution | 1rpm |
| Direction control | Direction is controlled by external switch signal. CW when switch is closed, CCW when switch is open. |
| Start/stop control | Start/stop is controlled by external switch signal. Pump runs when switch is closed, stops when switch is open. |
| Speed control | Built-in, Potentiometer control or 0-4V analogue signal control |
| Brake | The function of motor brake in second is controlled by external switch signal. Motor brakes when switch is closed. |
| Operating Temperature | 0°C ~ 40°C |
| Relative humidity | ≤ 80°C |
| Power supply | 12VDC/80W or 24VDC/80W |
| Weight | Pump drive for YZ pump head: 2.33kg Pump drive for KZ10/KZ15 pump head: 2.03kg |

Installation Drawing



For YZ, FG, DMD, BZ pump heads



For KZ10, KZ15 pump head

| Model (Product code, Speed control, Power supply) | Pump head | Tubing | Max. Flow Rate (mL/min) | Weight(kg) |
|--|---|--|--|------------|
| L500E-B012C-1 (05.71.100, 0-4V, 12VDC) | YZ1515X, YZ1115 | 13" 14" 19" 16" 25" 17" 18" | 1830 | 2.73 |
| | YZ2515X | 15" 24" | 1330 | |
| | YZ1125 | 15" 24" 35" 36" (36" only can be used for the pump with 24VDC) | 1830(pump with 12VDC) 2500(pump with 24VDC) | |
| L500I-B012C-1 (05.71.101, [knob], 12VDC) | FG15-13 | 13" 14" 19" 16" 25" 17" 18" | 1790 | 2.61 |
| | FG25-13 | 15" 24" | 1600 | |
| L500E-B024C-1 (05.71.102, 0-4V, 24VDC) | DMD15-13-B, DMD15-13-D | 2×13" 2×14" 2×19" 2×16" | 1720 | 2.76 |
| | BZ15-13-A | 14" | 125 | |
| L500I-B024C-1 (05.71.103, [knob], 24VDC) | BZ15-13-B | 16" | 380 | 2.64 |
| | BZ15-13-C | 25" | 800 | |
| | BZ15-13-D | 17" | 1340 | |
| | BZ25-13-B | 24" | 2340 | |
| L500E-B012C-2(05.71.104, 0-4V, 12VDC) | (1, 2, 3, 4) × KZ15-14 (Max.Speed: 450rpm) | 13" 14" 19" 16" | 190 | 2.13-2.43 |
| L500I-B012C-2(05.71.105, [knob], 12VDC) | (1, 2, 3, 4) × KZ10-24 (Max.Speed: 450rpm) | 1.02×0.85 1.52×0.85 2.06×0.85 2.79×0.9 | 104 | |

Note: [knob]--Potentiometer with knob.